



Archaeological Desk-Based Assessment in Advance of the Proposed development of Land at Black House Farm, Hinton Ampner, Hampshire

February 2018

Archaeological Desk-Based Assessment in Advance of the Proposed development of land at Black House Farm, Hinton Ampner, Hampshire.



Report for Nadim Khatter

Date of Report: 20th February 2018

SWAT ARCHAEOLOGY

Swale and Thames Archaeological Survey Company

School Farm Oast, Graveney Road

Faversham, Kent ME13 8UP

Tel; 01795 532548 or 07885 700 112

www.swatarchaeology.co.uk

Contents

1	INTRODUCTION	4
1.1	Project Background	4
1.2	The Site	4
1.3	The Proposed Development.....	4
1.4	Project Constraints	5
1.5	Scope of Document	5
2	PLANNING BACKGROUND.....	5
2.1	Introduction.....	5
2.2	Heritage Assets.....	5
2.3	National Planning Policy Framework (NPPF)	6
2.4	Regional Policies.....	9
3	AIMS AND OBJECTIVES.....	13
3.1	Introduction.....	13
3.2	Desk-Based Assessment – Chartered Institute for Archaeologists (2017) ...	13
4	METHODOLOGY	14
4.1	Introduction.....	14
4.2	Designated Heritage Assets.....	14
4.3	Sources	16
5	ARCHAEOLOGICAL AND HISTORICAL DEVELOPMENT.....	17
5.1	Introduction.....	17
5.2	Designated Heritage Assets.....	18
5.3	Previous Archaeological Works.....	19
5.4	Archaeological and Historical Narrative.....	24
5.5	Cartographic Sources and Map Regression	26
5.6	Aerial Photographs.....	28
5.7	Walkover Survey	29
5.8	Summary of Potential.....	30
6	IMPACT ASSESSMENT	33
6.1	Introduction.....	33
6.2	Historic Impacts.....	34
6.3	Summary of Impacts	34
7	ARCHAEOLOGICAL MITIGATION	34
7.1	Introduction.....	34
8	OTHER CONSIDERATION	35
8.1	Archive.....	35
8.2	Reliability/Limitations of Sources.....	35
8.3	Copyright	35
9	REFERENCES	36
9.1	Bibliographic.....	36
9.2	Websites.....	36
10	APPENDIX 1 – HCC HER Data (see Figures 7-10)	Error! Bookmark not defined.

List of Plates

- Plate 1. Aerial photograph from 1999
Plate 2. Aerial photograph from 2005
Plate 3. Aerial photograph from 2008
Plate 4. Aerial photograph from 2017
Plate 5. View of Site (looking North)
Plate 6. View of Site (looking South)
Plate 7. View of Site (looking East)
Plate 8. View of Site (looking West)

List of Figures

- Fig.1 Site location map and site Location plan 1:10000
Fig 2: Development in relation to OS Plan
Fig.3 Historic mapping OS 1:2,500 1896
Fig.4 Historic mapping OS 1:2,500 1909
Fig.5 Historic mapping OS 1:2,500 1970
Fig.6 Historic mapping OS 1:2,500 1994
Fig.7 HCCHER - Historic Buildings
Fig.8 HCCHER - Archaeology
Fig.9 HCCHER - Historic Landscape types
Fig. 10 HCCHER - Monuments

Archaeological Desk-Based Assessment in Advance of the of the Proposed Development of Land at Black House Farm, Hinton Ampner, Hampshire.

Summary

SWAT Archaeology has been commissioned by Nadim Khatter to prepare an Archaeological Desk-Based Assessment in advance of the proposed development of Land at Black House Farm, Hinton Ampner, Hampshire.

This Desk Based Assessment is intended to explore and disseminate the known and potential heritage resource within the site and the surrounding area, and to assess the likely impacts of the development proposals on this resource. Based on this data the potential for archaeological sites either on or in the near vicinity of the proposed development can be summarized as:

- Prehistoric: **low**
- Iron Age: **low**
- Roman: **low**
- Anglo-Saxon: **low**
- Medieval: **low**
- Post-Medieval: **High**
- Modern: **High**

This assessment has established that there is an archaeological interest within the site. This is defined as the potential for the presence of buried archaeological remains, relating to the Post Medieval and Modern periods. The planning application in relation to the proposed development at Black House Farm is likely that it would have an impact on any surviving archaeological remains at this farmstead site.

The need for, scale, scope and nature of any further assessment and/or archaeological works has therefore been recommended and should be agreed through consultation with the statutory authorities.

1 INTRODUCTION

1.1 Project Background

- 1.1.1 Swale & Thames Survey Company (SWAT) was commissioned Nadim Khatter (the 'Client'), to carry out an archaeological desk-based assessment of the proposed development area (PDA) at Black House Farm, Hinton Ampner, Hampshire, centred on National Grid Reference (NGR) SU 460977 125491 (Fig 1).
- 1.1.2 This document will be used in support of planning applications associated with the proposed development.

1.2 The Site

- 1.2.1 The proposed site sits at an average height of circa 107.5 m AOD. The site is located on level ground in the courtyard area of Black House Farm. The PDA is situated at the end of a long drive, off a no-through lane, surrounded by farmland and National Trust woodland and it located within the South Downs National Park. The PDA is situated in the civil parish of Bramdean and Hinton Ampner, an area administered by the City of Winchester. The hamlet of Hinton Ampner lies 1.5 miles to the north of the PDA, with the village of Kilmeston, 1 mile west. The city of Winchester is 8.5 miles, north west (Fig 1).
- 1.2.2 The British Geological Society (BGS 1995) shows that the local geology consists of Newhaven Chalk. There is superficial deposit being a very narrow spur from the north in the form of poorly stratified clay, silt, sand and gravel as the PDA sits lower than the immediate surrounding area formed by hill wash and soil creep. No geotechnical information is available at this time, which would offer confirmation of the existing soil sequence and provide a basis from which archaeological horizons could be suggested.

1.3 The Proposed Development

- 1.3.1 The Planning Officer of Winchester City Council (WCC) has requested that an Archaeological Desktop Assessment be undertaken in advance of development, taking into account all known records of the site in order to gauge the potential of any archaeological remains (Fig. 2).

1.4 Project Constraints

- 1.4.1 No constraints were associated with this project.

1.5 Scope of Document

- 1.5.1 This assessment was requested by the Client in order to determine, as far as is possible from existing information, the nature, extent and significance of the Historic Environment and to assess the potential impact of development on Heritage Assets. The assessment forms part of the initial stages of the archaeological investigation and is intended to inform and assist with decisions regarding archaeological mitigation for the proposed development and associated planning applications.

2 PLANNING BACKGROUND

2.1 Introduction

- 2.1.1 National legislation and guidance relating to the protection of, and proposed development on or near, important archaeological sites or historical buildings within planning regulations is defined under the provisions of the Town and Country Planning Act 1990. In addition, local authorities are responsible for the protection of the historic environment within the planning system.

2.2 Heritage Assets

- 2.2.1 Designated heritage assets are defined in NPPF Annex 2 as:

‘World Heritage Sites, Scheduled Monuments, Listed Buildings, Protected Wreck Sites, Registered Park and Gardens, Registered Battlefields and Conservation Areas designated under the relevant legislation.’

- 2.2.2 Designation is a formal acknowledgement of a building, monument or site’s significance, intended to make sure that the character of the asset in question is protected through the planning system and to enable it to be passed on to future generations.
- 2.2.3 Statutory protection is provided to certain classes of designated heritage assets under the following legislation:

- Planning (Listed Buildings and Conservation Areas) Act 1990;
- Ancient Monuments and Archaeological Areas Act 1979; and
- Protection of Wrecks Act 1973

2.3 National Planning Policy Framework (NPPF)

2.3.1 The Historic Environment, as defined in the National Planning Policy Framework (NPPF 2012): Annex 2, comprises:

‘all aspects of the environment resulting from the interaction between people and places through time, including all surviving physical remains of past human activity, whether visible, buried or submerged, and landscaped and planted or managed flora.’

2.3.2 NPPF Annex 2 defines a Heritage Asset as:

‘a building monument, site, place, area or landscape identified as having a degree of significance meriting consideration in planning decisions, because of its heritage interest. Heritage assets include designated heritage assets and assets identified by the local planning authority (including local listing)’.

2.3.3 NPPF Section 12: Conserving and enhancing the historic environment sets out the principal national guidance on the importance, management and safeguarding of heritage assets within the planning process. The aim of NPPF Section 12 is to ensure that Local Planning Authorities, developers and owners of heritage assets adopt a consistent approach to their conservation and to reduce complexity in planning policy relating to proposals that affect them.

2.3.4 Paragraph 126 of the NPPF states that:

Local planning authorities should set out in their Local Plan a positive strategy for the conservation and enjoyment of the historic environment, including heritage assets most at risk through neglect, decay or other threats. In doing so, they should recognise that heritage assets are an irreplaceable resource and conserve them in a manner appropriate to their significance. In developing this strategy, local planning authorities should take into account;

- *the desirability of sustaining and enhancing the significance of heritage assets and putting them to viable uses consistent with their conservation;*
- *the wider social, cultural, economic and environmental benefits that conservation of the historic environment can bring;*
- *the desirability of new development making a positive contribution to local character and distinctiveness; and*
- *opportunities to draw on the contribution made by the historic environment to the character of a place.*

2.3.5 Paragraph 128 of the NPPF states that:

In determining applications, local planning authorities should require an applicant to describe the significance of any heritage assets affected, including any contribution made by their setting. The level of detail should be proportionate to the assets' importance and no more than is sufficient to understand the potential impact of the proposal on their significance. As a minimum, the relevant historic environment record should have been consulted and the heritage assets assessed using appropriate expertise where necessary. Where a site on which development is proposed includes or has the potential to include heritage assets with archaeological interest, local planning authorities should require developers to submit an appropriate desk-based assessment and, where necessary, a field evaluation.

2.3.6 Paragraph 129 of the NPPF states that:

Local planning authorities should identify and assess the particular significance of any heritage asset that may be affected by a proposal (including, by development affecting the setting of a heritage asset) taking account of the available evidence and any necessary expertise. They should take this assessment into account when considering the impact of a proposal on a heritage asset, to avoid or minimise conflict between the heritage asset's conservation and any aspect of the proposal.

2.3.7 The NPPF, Section 12, therefore provides the guidance to which local authorities need to refer when setting out a strategy for the conservation and enjoyment of the historic environment in their Local Plans. It is noted within this, that heritage assets should be conserved in a manner appropriate to their significance.

2.3.8 The NPPF further provides definitions of terms which relate to the historic environment in order to clarify the policy guidance given. For the purposes of this report, the following are important to note:

- **Heritage Asset.** This is ‘a building, monument, Site, place, area or landscape identified as having a degree of significance meriting consideration in planning decisions’. These include designated heritage assets and assets identified by the local planning authority.
- **Significance.** The value of a heritage asset to this and future generations because of its heritage interest. This interest may be archaeological, architectural, artistic or historic. Significance derives not only from a heritage asset’s physical presence, but also from its setting.

2.3.9 Paragraphs 132 and 136 consider the impact of a proposed development upon the significance of a heritage asset.

2.3.10 Paragraph 132 emphasises that when a new development is proposed, great weight should be given to the asset’s conservation and that the more important the asset, the greater this weight should be. It is noted within this paragraph that significance can be harmed or lost through the alteration or destruction of the heritage asset or by development within its setting. Adding, as heritage assets are irreplaceable, any harm or loss should require clear and convincing justification. Substantial harm to or loss of a Grade II Listed Building or Registered Park or Garden should be exceptional. Substantial harm to or loss of designated heritage assets of the highest significance, notably Scheduled Monuments, Protected Wreck Sites, Battlefields, Grade I and II* Listed Buildings, Grade I and II* Registered Parks and Gardens, and World Heritage Sites, should be wholly exceptional.

2.3.11 Paragraph 133 states that where a proposed development will lead to substantial harm to or total loss of significance of a designated heritage asset, local planning authorities should refuse consent, unless it can be demonstrated that the substantial harm or loss is necessary to achieve substantial public benefits that outweigh that harm or loss, or all of the following apply:

- The nature of the heritage asset prevents all reasonable uses of the Site; and

- No viable use of the heritage asset itself can be found in the medium term through appropriate marketing that will enable its conservation; and
 - Conservation by grant-funding or some form of charitable or public ownership is demonstrably not possible; and
 - The harm or loss is outweighed by the benefit of bringing the Site back into use.
- 2.3.12 Conversely, paragraph 133 notes that where a development proposal will lead to less than substantial harm to the significance of a designated heritage asset, this harm should be weighed against the public benefits of the proposal, including securing its optimum viable use.
- 2.3.13 Paragraph 136 states that LPAs should not permit loss of the whole or part of a heritage asset without taking all reasonable steps to ensure the new development will proceed after the loss has occurred.
- 2.3.14 Paragraph 137 encourages LPAs to look for new development opportunities within Conservation Areas, and states that developments which better reveal or enhance the significance of a designated heritage asset and its setting, will be looked upon favourably.

2.4 Regional Policies

- 2.4.1 Winchester City Council has a Local Plan adopted in 2013. The plan has a number of policies relevant to archaeology and the Historic Environment:
- 2.4.2 POLICY HE1: Important archaeological sites, monuments (whether above or below ground), historic buildings and landscape features, and their settings (as identified and recorded in the Sites & Monuments Record), whether scheduled or not, are affected by development proposals, permission will not be granted for development unless the Local Planning Authority is satisfied that, where appropriate, adequate provision has been made for their preservation in situ and ongoing management, conservation and protection.
- 2.4.3 POLICY HE2: Where there is evidence that archaeological sites, monuments (whether above or below ground), historic buildings and landscape features, and their settings (as identified and recorded in the Sites & Monuments Record) may

be present on a site, but their extent and importance is unknown, the Local Planning Authority will refuse applications which are not supported by adequate archaeological assessment which clarifies the importance of the feature and demonstrates the impact of development.

2.4.4 POLICY HE4: New development which would detract from the immediate or wider landscape setting of any part of a Conservation Area will not be permitted. Particular attention should be paid to conserving attractive views out of and into the area, including those from more distant/higher vantage points. Opportunities should be taken to improve views that detract from the appearance of the area.

2.4.5 POLICY HE5: Within Conservation Areas, development proposals which preserve or enhance the character or appearance of the area, and accord with other relevant proposals of this Plan, will be permitted, provided: Extensions (a) the character, scale and plan form of the original building are respected and the extension is secondary in nature and does not dominate principal elevations; (b) appropriate materials and detailing are proposed and the extension would not result in the loss of features that contribute to the character or appearance of the Conservation Area. Alterations to buildings requiring planning permission

- The character of the existing building is respected and the changes do not result in the loss of original architectural features, traditional materials or townscape features that contribute to the character or appearance of the Conservation Area.
- Where appropriate, the reinstatement of such features will be encouraged as part of a planning application, to preserve or enhance the character or appearance of the Conservation Area.
- Permission will not be granted for schemes, which involve the erosion of character, such as the use of windows, doors or conservatories made of aluminium, uPVC or other non-traditional materials or the replacement of traditional roofing materials with inappropriate ones.

2.4.6 POLICY HE7: Within a Conservation Area, consent will only be granted for proposals involving total or substantial demolition of unlisted buildings where the existing building:

- Is of inappropriate structure or design where removal or replacement will preserve or enhance the area; or

- Makes no positive contribution to the character, appearance or historic interest of the area, either individually or as part of more general views within or from outside the Conservation Area; or
- Cannot be repaired or adapted so as to extend its useful life.

Conservation Area Consent will also normally be subject to planning permission being granted for the site's redevelopment. Consent will then be conditional on a contract for the approved development work being let prior to any demolition work being undertaken.

2.4.7 POLICY HE8: The Local Planning Authority will not permit development which fails to retain those essential features upon which the character of a Conservation Area depends

2.4.8 POLICY HE14: The Local Planning Authority will not grant planning permission (where required) or listed building consent for any external or internal alteration, addition to, or change of use of, a listed building, which would adversely affect its architectural or historic character. Where alterations are permitted, the applicant will be responsible for providing adequate recording of those affected parts of the structure and conditions may be imposed to secure this.

The Local Planning Authority will not permit alterations which involve demolition of any part of a listed building unless:

- The historic form and structural integrity of the building are retained;
- Architectural and historic features important to the character of the building (including internal features) are retained;
- The work does not harm the listed building;
- The Local Planning Authority is satisfied that the structure is wholly beyond repair, incapable of reasonable beneficial use, or of inappropriate structure or design.

Consent will not be granted without detailed plans showing the existing building and proposed works and a statement setting out the justification, design approach and methods for the work.

2.4.9 POLICY HE17: The change of use of redundant agricultural and other rural or industrial buildings of historic or architectural interest to employment or storage uses will be permitted provided that:

- The Local Planning Authority is satisfied that the building is capable of conversion without significant structural alteration or changes which would be detrimental to the distinctive character of the building (or its setting), its historic fabric or features. If appropriate, a significant proportion of the building's interior should be left un-subdivided to maintain its spatial qualities;
- The building is incapable of being used in a more suitable way, e.g. ancillary to an adjoining use;
- If the building forms part of a complex of agricultural or industrial buildings, a comprehensive strategy is put forward which shows the effects on any listed buildings and their settings;
- The development satisfies Proposals DP.3, C.16, and other relevant proposals of this Plan.

Residential conversions will not be permitted unless this is the only means of ensuring the retention of the building and its character. A sequential approach will be required, including evidence that other acceptable uses have been fully considered and why they are not viable.

2.4.10 POLICY CP20: The Local Planning Authority will continue to conserve and enhance the historic environment through the preparation of Conservation Area Appraisals and Management Plans and/or other strategies, and will support new development which recognises, protects and enhances the District's distinctive landscape and heritage assets and their settings. These may be designated or undesignated and include natural and man-made assets associated with existing landscape and townscape character, conservation areas, scheduled ancient monuments, historic parks and gardens, listed buildings, historic battlefields and archaeology. Particular emphasis should be given to conserving:

- Recognised built form and designed or natural landscapes that include features and elements of natural beauty, cultural or historic importance;
- local distinctiveness, especially in terms of characteristic materials, trees, built form and layout, tranquillity, sense of place and setting.

3 AIMS AND OBJECTIVES

3.1 Introduction

3.1.1 This Desk-Based Assessment was commissioned by Nadim Khatter, to support the proposed development at Black House Farm. This assessment has been prepared in accordance with guidelines set out by the Chartered Institute for Archaeologists (see below).

3.2 Desk-Based Assessment – Chartered Institute for Archaeologists (2017)

3.2.1 This desktop study has been produced in line with archaeological standards, as defined by the Chartered Institute for Archaeologists (2014, revised 2017). A desktop, or desk-based assessment, is defined as being:

‘Desk-based assessment will determine, as far as is reasonably possible from existing records, the nature, extent and significance of the historic environment within a specified area. Desk-based assessment will be undertaken using appropriate methods and practices which satisfy the stated aims of the project, and which comply with the Code of conduct and other relevant regulations of ClfA. In a development context desk-based assessment will establish the impact of the proposed development on the significance of the historic environment (or will identify the need for further evaluation to do so), and will enable reasoned proposals and decisions to be made whether to mitigate, offset or accept without further intervention that impact.’

(2017:4)

3.2.2 The purpose of the desk-based assessment is, therefore, an assessment that provides a contextual archaeological record, in order to provide:

- *an assessment of the potential for heritage assets to survive within the area of study*

- *an assessment of the significance of the known or predicted heritage assets considering, in England, their archaeological, historic, architectural and artistic interests*
- *strategies for further evaluation whether or not intrusive, where the nature, extent or significance of the resource is not sufficiently well defined*
- *an assessment of the impact of proposed development or other land use changes on the significance of the heritage assets and their settings*
- *strategies to conserve the significance of heritage assets, and their settings*
- *design strategies to ensure new development makes a positive contribution to the character and local distinctiveness of the historic environment and local place-shaping*
- *proposals for further archaeological investigation within a programme of research, whether undertaken in response to a threat or not.*

IFA (2017:4)

4 METHODOLOGY

4.1 Introduction

- 4.1.1 The methodology employed during this assessment has been based upon relevant professional guidance including the Chartered Institute for Archaeologists' *Standard and guidance for historic environment desk-based assessment* (CIfA, 2017).

4.2 Designated Heritage Assets

- 4.2.1 There are a number of criteria to address and they include the impact of the proposed development on the significance of the Heritage Assets.

Heritage Assets

- 4.2.2 Any Heritage Asset which includes a World Heritage Site, Scheduled Monument, Listed Building, Wreck, Registered Park or Garden, Conservation Area or Landscape can be identified as having a degree of significance meriting consideration in planning decisions. Heritage Assets are the valued components of the historic environment and will include designated Heritage Assets as well as assets identified by the Local Planning Authority during the process of decision making or through the plan making process.

Setting

- 4.2.3 The surroundings in which a Heritage Asset is experienced. Its extent is not fixed and may change as the asset and its surroundings evolve. Elements of a setting may make a positive or negative contribution to the significance of an asset or may affect the ability to appreciate that significance or may be neutral.

Significance

- 4.2.4 The value of a Heritage Asset to this and future generations because of its heritage interest. That interest may be archaeological, architectural, artistic or historic. Significance may be informed by a number of factors which may include; assessment of the significance of the site, setting and building, where relevant, under a number of headings:
- Historic significance – the age and history of the asset, its development over time, the strength of its tie to a particular architectural period, the layout of a site, the plan form of a building, internal features of special character including chimneystacks and fireplaces,
 - Cultural significance – the role a site plays in an historic setting, village, town or landscape context, the use of a building perhaps tied to a local industry or agriculture, social connections of an original architect or owner,
 - Aesthetic/architectural significance – the visual qualities and characteristics of the asset (settlement site or building), long views, legibility of building form, character of elevations, roofscape, materials and fabric special features of interest,

- Archaeological significance – evolution of the asset, phases of development over different periods, important features, evidence in building fabric, potential for below ground remains.

4.3 Sources

- 4.3.1 A number of publicly accessible sources were consulted prior to the preparation of this document.

Archaeological databases

- 4.3.2 Although it is recognised that national databases are an appropriate resource for this particular type of assessment, the local Historic Environmental Record held at Hampshire County Council (HCCHER) contains sufficient data to provide an accurate insight into catalogued sites and finds within both the proposed development area and the surrounding landscape.
- 4.3.3 The National Heritage List for England (NHLE), which is the only official and up to date database of all nationally designated heritage assets and is the preferred archive for a comprehensive HER search.

Cartographic and Pictorial Documents

- 4.3.4 A full map regression exercise has been incorporated within this assessment. Research was carried out using resources offered by the Hampshire County Council, the internet and Ordnance Survey (OS). A full listing of bibliographic and cartographic documents used in this study is provided in Section 10.

Aerial photographs

- 4.3.5 The study of the collection of aerial photographs held by Google Earth was undertaken (Plates 1-4).

Geotechnical information

- 4.3.6 No geotechnical information was available at the time of preparing this assessment.

Secondary and Statutory Resources

- 4.3.7 Secondary and statutory sources, such as regional and periodic archaeological studies, archaeological reports associated with development control, landscape studies, dissertations and research frameworks are considered appropriate to this type of study and have been included within this assessment.

5 ARCHAEOLOGICAL AND HISTORICAL DEVELOPMENT

5.1 Introduction

- 5.1.1 This section of the assessment will focus on the archaeological and historical development of this area, placing it within a local context. Each period classification will provide a brief introduction to the wider landscape (1km radius centred on each site of the PDA), followed by a full record of archaeological sites, monuments and records within the site's immediate vicinity. Time scales for archaeological periods represented in the report are listed in Table 1.

Prehistoric	Palaeolithic	c. 500,000 BC – c.10,000 BC
	Mesolithic	c.10,000 BC – c. 4,300 BC
	Neolithic	c. 4,300 BC – c. 2,300 BC
	Bronze Age	c. 2,300 BC – c. 600 BC
	Iron Age	c. 600 BC – c. AD 43
	Romano-British	c. AD 43 – c. AD 410
	Anglo-Saxon	AD 410 – AD 1066
	Medieval	AD 1066 – AD 1485
	Post-medieval	AD 1485 – AD 1900
	Modern	AD 1901 – present day
Table 1: Classification of Archaeological periods		

- 5.1.2 Features in and around the PDA has predominately been identified via aerial photography and mainly consists of field systems and chalk pits. There are no find spots or archaeological excavations within the assessment area. Due to the nature of the aerial photography not all those features that are visible, have been able to be dated.
- 5.1.3 The earliest feature in the immediate locality is an early Neolithic enclosure (39835) and an early Bronze Age ring ditch (62487). Neither of which have been excavated. Most other features relating to field systems and extraction pits were

of Medieval and Post Medieval in date. It is considered likely that the chalk was locally excavated and spread across the surrounding field in order to improve the soil texture and fertility.

5.2 Designated Heritage Assets

- 5.2.1 One of the tasks of the site visit was aimed to identify any designated heritage assets within the wider context of the PDA in accordance with The Setting of Heritage Assets – English Heritage Guidance (English Heritage 2011).
- 5.2.2 This guidance states that “setting embraces all of the surroundings (land, sea, structures, features and skyline) from which the heritage asset can be experienced or that can be experienced from or with the asset” (The Setting of Heritage Assets, English Heritage 2011).
- 5.2.3 There are two listed buildings within the assessment area (Table 2), one being the farmhouse associated with the PDA.

Table 1 Designated Heritage Assets

9768	Post Medieval	Black House Farmhouse. Grade II Listed (1155976). Early C16 and C17. Timber frame with brick infill, main part encased on ground floor, in rubble flint with brick and stone dressings, wing has been rebuilt in brick, roof thatched with tiled valleys. T-shaped with 2 bay, 2 storey building with 1 1/2 storey 2 bay wing added to rear at centre. Garden front 2 storey, 2 bay with plinth, flint ground floor with 2 C19 3 light casements and above 2 C16 oriel windows supported on single central timber bracket with C19 3 light casements, C19 externals tack at right end. Other windows and doors C19. Roof half hipped with decorated ridge piece, and outshot on one side of rear wing. Dated by dendrochronology to 1620.
10962	Post Medieval	Riversdown House. Grade II* listed (1350307). Used as a school. C14 timber framed hall with C17 timber framed internal additions and fireplaces, early C19 cladding, and restoration with many features of c.1900. Brick walls of Flemish Garden Wall bond, some cambered openings, one large stepped buttress on the east elevation. Tile roof, hipped at the north end, extending to a low eaves on the west side, with narrow hipped dormers at two levels, hipped and half-hipped minor extensions. The general form of the large medieval hall is seen externally,

		<p>above walls of one, two and three storeys, forming irregular facades as minor projections to the main block, irregular fenestration. Casements, mostly small: the south side has a narrow two-storeyed splayed bay, tile-hung between the windows, with a steep hipped slate roof. Gabled porch. The low wings and projecting features represent an interesting Art Nouveau exterior. Dendrochronology dated it to 1326 and 1327. In 1337, Hugh de St. John died possessed of Riversdown and he may well have been the builder of the hall. The St. John family was one of the main lay landowners in Hampshire at that time.</p>
--	--	--------------------------------------------------------------------------------------------------------------------------------------------------------------------------------------------------------------------------------------------------------------------------------------------------------------------------------------------------------------------------------------------------------------------------------------------------------------------------------------------------------------------------------------------------------------------------------------------------------------------------------------

5.3 Previous Archaeological Works

- 5.3.1 The HCCHER does not contain any entries pertaining to archaeological investigations within the assessment area. A number of aerial surveys have been undertaken in the vicinity of the PDA (**Fig. 10**) and these are detailed below.
- 5.3.2 During 2007 a survey of the National Trust Estate at Hinton Ampner was undertaken. The aim of this work was to record existing monuments identified in the AHBR as well as to identify any new sites or monuments. In total 164 features were recorded by this work (CD Rom: The National Trust Estate at Hinton Ampner, Hampshire. 2008. WA Heritage).
- 5.3.3 In 2005, a survey of aerial photographs and digital mapping results was carried out by Cornwall County Council for the South Downs National Park. These cropmarks were interpreted by the National Mapping Programme and are labelled NMP Cropmark Data. Other cropmarks have been derived from photos by Hampshire County Council HER.
- 5.3.4 The site is in an area characterised by HCC Historic Landscape Characterisation as asserted fields at the spot of the PDA, surrounded by old woods to the east and west. Beyond that, to the south, west and north are large wavy fields and to the east small wavy fields. Assorted fields relate to enclosures, which were formed by the clearance of woodland and scrub to form arable land. Generally early medieval to early post-medieval in age. Assarts do not seem to occur in association with downland or within areas which were once open fields. Regular assarts tend to be 19th or early 20th in date and associated with the clearance or enclosure of woodland or rationalisation of existing assarts. For fields with wavy boundaries, this enclosure type is assumed normally to relate to medieval

to 17th/18th century informal enclosure, predating the period when boundaries were carefully surveyed.

0-100m Radius

5.3.5 There are no HCCHER records in this area.

100-200m Radius

5.3.6 There are no HCCHER records in this area.

200-300m Radius

5.3.7 There are no HCCHER records in this area.

300-400m Radius

5.3.8 There are chalk pits circa 315m east, north east from the PDA (61486) and are the pits marked just outside of the eastern corner boundary of the PDA. Three roughly circular post medieval pits are visible on aerial photographs from 2005. They are considered likely to be either dewponds or agricultural chalk pits.

400-500m Radius

5.3.9 A possible early Medieval, Saxon earthen bank (60141). Travelling north-north-west to south-south-east alignment, a bank with a ditch to the west. The bank measures approximately 4m wide and 1m high with a ditch measuring 2m wide and 0.3m deep. The bank represents the parish boundary between Hinton Ampner and Kilmeston with the boundary line revealed on the 1839 Hinton Ampner Tithe map and likely to date back to the Saxon period.

500-600m Radius

5.3.10 An early Neolithic enclosure (39835) has been identified by Aerial photographs circa 600m north east of the PDA. The enclosure is defined by a bank approx. 1m high and 4m wide and a 3m wide ditch. Surviving aspects have been mapped by OS. However, the earthwork continues well beyond the mapped stretches where it has been reduced by later cultivation. The interior of the enclosure is subdivided by banks about 65m apart and is abutted on the outside by a series of linear earthworks. These are likely to represent a palimpsest of pre-woodland

field boundaries and coppice earthworks, while the main mapped enclosure may be an early coppice of woodland boundary bank.

600-700m Radius

- 5.3.11 Chalk Pit considered to be Post Medieval (61483) circa 640m west, south west of the PDA. Two roughly circular pits are visible on aerial photographs from 2005. They are considered likely to be either dewponds or agricultural chalk pits.
- 5.3.12 A Bronze Age Ring ditch (62487), circa 690m south, south east from the PDA has been identified. An oval enclosure, 32m x 22m, is visible as a cropmark on aerial photographs from 2004.

700-800m Radius

- 5.3.13 A Post Medieval quarry (61482) is visible via aerial photographs from 2005 circa 780m west, north west from the PDA. The pit is roughly 71m diameter. Three further hollowed pits are visible within the large pit; each is at least 20m wide.
- 5.3.14 A large chalk pit (61487), roughly oval shape circa 790m south east of the PDA, is estimated to be 66m by 33m, is visible as a cropmark on aerial photographs from 2010. It is considered likely to be the remains of either a dewpond or an agricultural chalk pit, of post medieval date.
- 5.3.15 More Post Medieval chalk pits (61579), circa 770m north, north west of the PDA was found via aerial photographs from 2005. It is seen as two roughly oval pits and they are considered likely to be the remains of either dewponds or agricultural chalk pits.

800-900m Radius

- 5.3.16 Circa 820m north, north east of the PDA are four roughly circular pits (61578), visible on aerial photographs from 2005, as smooth, bowl-shaped earthwork hollows. They are considered likely to be either dewponds or agricultural chalk pits, of Post Medieval origin.

900-1000m Radius

- 5.3.17 There are a large number of cropmarks identified by aerial photographs on the periphery of the assessment area. An earthen bank recorded in 2007 of Post Medieval to Modern date (60175) circa 980m north west. It is a series of low banks and mounds measuring up to 0.6m high possibly indicating the location of former structures. An examination of the available historic mapping reveals no evidence for structures in this location. It is possible that the banks and mounds represent a former pheasant rearing facility similar to those seen elsewhere within the wooded area of the estate. This would indicate a 20th century date.
- 5.3.18 Three removed field boundaries of Post Medieval date, forming part of a field system are visible as cropmark banks on aerial photograph from 2005 (61283). They are circa 980m west. South west of the PDA. A field system (61584) of Medieval origin is visible on aerial photographs is 960m north west of the PDA.
- 5.3.19 Further pits are visible as cropmarks on aerial photographs circa 970m north, north west of the PDA (61585). The nine roughly oval pits are considered likely to be the remains of either dewponds or agricultural chalk pits, of post medieval date. An additional pit (61765) is seen 980m north east of the PDA that are Post Medieval in origin. A roughly oval pit, 39m by 22m, is visible as a cropmark on aerial photographs from 2005. It is considered likely to be the remains of either a dewpond or an agricultural chalk pit, of post medieval date.

Undated

- 5.3.20 Another two small pits are circa 650m west, south west of the PDA (61484) and are undated. Two small pits are visible as cropmarks on aerial photographs from 2005. Their function and date are unclear.
- 5.3.21 A Field System with field boundaries of uncertain date are visible as cropmark banks on aerial photographs from 2005 (60936) are circa 830m west, south west of the PDA. Another field system, of uncertain date is circa 935m north of the PDA (61580). They are visible as cropmarks on aerial photographs from 2005. A further field system of uncertain date and origin is 1km north from the PDA (61583).

- 5.3.22 Circa 990m west, north west of the PDA are two small pits (61481) are visible as cropmarks on aerial photographs. Function and date are unclear.
- 5.3.23 950m south, south east are Two linear features (38534), with slight curvature, possibly a woodland bank or lynche. Seen from a 1984 air photo survey.
- 5.3.24 Further pits are visible as cropmarks on aerial photographs circa 990m west, north west of the PDA (61481). Function and date are unclear.

Names

- 5.3.25 There are two additional HCCHER records relating to early documentation regarding names. Circa 980m south west of the PDA is ORYFES DENE (Farm on the Down by the river), First documented in AD 961 (34143).
- 5.3.26 Wheely Farm, 870m south of the PDA and still in existence (41410) First documented in AD 1045 as WEO LEAGE (Wood or grove with a temple or shrine).

Farmsteads

- 5.3.27 There are no HCCHER records listed for Farmsteads in the area. However, the PDA site is clearly that of a farmstead. It is a regular courtyard L plan with agricultural buildings on two sides (south and west) and represents the application of modern farming methods of the late 18th and 19th centuries. The farmhouse is Post Medieval, dating from 1620 is detached from the working buildings on the north side of the courtyard. The associated agricultural buildings are not listed and are of unknown date but were in existence prior to 1896. According to the definition by Historic England, these buildings may be defined as curtilage under the listed building legislation.
- 5.3.28 It is important that the relationship between the farmhouse and these building are understood. HCC has undertaken an Historic Farmsteads and Landscape Character in Hampshire survey which was published in 2005. The PDA has been included as a farmstead within this survey as identified from the maps included. The report also comments:

“Complete farmsteads representative of southern English downland agricultural systems, as found in the South East and eastern areas of the South West, are rare and should be retained. These comprise loose courtyard arrangements, retain large barns, stabling and a granary,”

5.4 Archaeological and Historical Narrative

- 5.4.1 Winchester is England’s ancient capital and former seat of Alfred the Great. The settlement of Winchester begins in about 150BC. The area around Winchester has been inhabited since prehistoric times and is densely populated with Bronze Age ring ditches and barrows. There are also three Iron Age hillforts, Oram's Arbour, St. Catherine's Hill, and Worthy Down all in the nearby vicinity. In the Late Iron Age, a more urban settlement type developed, known as an oppidum, although the archaeology of this phase remains indistinct. It was overrun by Gaulish tribes known as the Belgae sometime during the first century BCE. It seems to have been known as Wentā or Venta, from the Brittonic for "town" or "meeting place". Winchester is 60 miles from London and 10 miles from Southampton on the south coast.
- 5.4.2 After the Roman conquest of Britain, the settlement was the capital of the Belgae and was distinguished as Venta Belgarum, "Venta of the Belgae". Winchester was given protective stone walls in the early third century and at this time the city was one of the largest towns in Roman Britain. Like many other Roman towns however, Winchester began to decline in the later fourth century.
- 5.4.3 When the Romans left Britain in 410 AD, urban life seems to have continued at Venta Belgarum until around 450 AD. It may have continued as a small administrative centre after that on the site of the later Anglo-Saxon palace. Possibly referred to as the Cair Guinntguic ("Fort Venta"). Cemeteries dating to the 6th and 7th centuries suggest an Anglo-Saxon revival of the settlement.
- 5.4.4 The city became known as Wintan-ceastre in Old English. In 648, King Cenwalh of Wessex erected the Church of SS Peter and Paul and this later became a cathedral in the 660s. The present form of the city dates to reconstruction in the late 9th century, when king Alfred the Great obliterated the Roman street plan in favour of a new grid in order to provide better defence against the Vikings.

- 5.4.5 In the early tenth century there were two new ecclesiastical establishments, the convent of Nunnaminster, founded by Alfred's widow Ealhswith and the New Minster. Bishop Æthelwold of Winchester created the drainage system, the 'Lockburn', which served as the town drain until 1875, and still survives. In the late tenth century, the cathedral was enlarged as a centre of the cult of the ninth century Bishop of Winchester, Saint Swithun. Originally built in 1079, Winchester Cathedral remains the longest Gothic cathedral in Europe. It contains architecture from the 11th to the 16th century and is the place of interment of numerous Bishops of Winchester, Anglo-Saxon monarchs and later monarchs such as King Canute and William Rufus.
- 5.4.6 The name of Hinton Ampner derives from "*heah*" in old English meaning high place and "*tun*" meaning enclosure, possibly a farmstead or an estate. The Ampner was added in Tudor times, which is a corruption of the word of almoner and probably reflects when the manor was held by, and paid the expenses of, the almoner of St Swithin's, Winchester. The place is on the western end of a ridge overlooking south towards the Meon Valley and north towards the source of the river Itchen near Cheriton. Within the parish of Bramdean and Hinton Ampner, there are circa 10 barrows identified as Bronze age, with a Neolithic long barrow. A number which pass close to the South Downs way, to the south of the PDA circa 3km south west, 1.5km south, 1.8 km south east, 1.8km east.
- 5.4.7 In the 1086 Domesday book, Hinton Ampner is referred to as "*Hentune*". The village was in the lands of the Monastery of Winchester. It had 35 households, eight hides, land for eight ploughs, 15 villagers, 14 smallholders, six slaves. There were eight acres of meadow, woodland and pigs, along with a church. Total value £8. This confirms the rural farming nature of the village. The manor remained in the possession of the priory of St. Swithun until the Dissolution when it passed with the other manors belonging to the priory to the dean and chapter of Winchester, by whom it was leased.
- 5.4.8 The Tudor period saw the building of a house near the site of the present Hinton Ampner House. It was described in described in 1650 as comprising a large hall, two parlours, and 21 chambers, with brewhouse, malthouse, stables, barns, a hop garden and bowling green. More than 700 acres of land were attached to the manor, including a common, containing 100 acres.

- 5.4.9 This house was pulled down in 1793 after its replacement had been built about 50 meters to the south. The current house was built in 1790. Parkland came directly up to the house, which was originally designed to be a hunting lodge. The house was remodelled extensively in 1867. And was further remodelled again in the Neo-Georgian style by Trenwith Wills and Lord Gerald Wellesley for Ralph Dutton between 1936 and 1939. It was badly damaged by fire in 1960, and restored again much as it had appeared in 1936. The property is now owned by The National Trust.
- 5.4.10 All Saints church mentioned in the Domesday book is in the grounds of Hinton Ampner House. Built from flint with stone corners, it was built in the C13th on the foundations of an earlier Saxon church. The nave was a pre-Conquest structure until substantial rebuilding took place in 19th century. The timber bell chamber is typical of small churches in this part of the country. The bells date from the 17th century. For the village, the main group of house cluster around the manor house and church.
- 5.4.11 The parish of Hinton Ampner extends south of the village and within this area there are isolated cottages and farms where historically the inhabitants were mostly employed in agriculture, with the land in the parish a mix of arable, pasture and woodland.
- 5.4.12 An area of outstanding natural beauty (AONB) was designated in East Hampshire in 1962, and this designation was revoked in 2010 together with the neighbouring Sussex Down AONB, to become the South Downs National Park. The park covers 16,000 square KM stretches for 140 kilometres (87 mi) from Winchester in the west to Eastbourne in the east through the counties of Hampshire, West Sussex and East Sussex across an area of chalk. Weathering and erosion during the last ice age sculpted the landscape into its valleys, distinct hilltops and ridges.

5.5 Cartographic Sources and Map Regression

Historic OS map 1892 1:2,500

- 5.5.1 The site is labelled Black House and is comprised of a number of different field designations. The farmhouse, situated on the north range of buildings, is in an

area designated 290 (1.441). To the north east of the farmhouse is field 291 (8.173), to the north west is field 294 (5.034) and at the southern end of that fields, to the west of the farm buildings is a small wooded area, designated 295 (0.767) with an old chalk pit in the south eastern corner. To the south east is field 298 (2.950), within which is Blackhouse Pond designated 297 (0.349). The south eastern boundaries of fields 291 and 298 is marked as the parish boundary line for Hinton Ampner, that still remains the parish line to this day. The farm buildings situated to the south of the farmhouse show a western range adjoining a larger southern range, creating a L shaped courtyard. Running north to south from the courtyard is the access track to the farm from the road. The road terminates at the farmyard track with a chalk pit. The area outside of the PDA boundary is woodland in the west and north areas with large agrarian fields 296 (174.155) and one of size 34.433, split by a linear wooded area. From the north western corner of field 294, there appears to be a track through the wood travelling westwards. There is also a footpath labelled along the southern boundary of the wood area 295, turning south at the southern end of the courtyard. It is not clear from the map whether this footpath also travels southwards from the access road, along the access track to join up with the one that continues southwards away from the farm (Fig.3) It is clear in the current OS map (Fig. 1) that the footpath currently travels southwards from the road, down the access road, pass the western side of the courtyard and then continues on southwards beyond the farm.

Historic OS map 1909 1:2,500

5.5.2 There appears to be little change. The fields have retained the same designations. The footpath along the southern end of wood 295 is no longer marked but it is still showing moving southwards from the courtyard area. The chalk pit previously marked at the termination of the road is no longer marked as a chalk pit. The shape and size of the farm buildings appear unchanged. (Fig.4).

Historic OS map 1970 1:2,500

5.5.3 The site is labelled as Black House Farm. Field 294 to the west of the farm yard is re-designated 9054 (2.086ha). The wooded area 295 at the southern end of this

field has reduced in size and now just covers the disused chalk pit. It is re-designated 9246 (0.223ha). Field 291 appears unchanged and is re-designated 0856 (3.346ha). The pond area appears more wooded around it but unchanged in shape. The field in which the pond is situated is now smaller having had an area separated off in the southern corner. The new area is designated 9835 (0.81ha), with the remaining field re-designated 0142 (1.037ha). The chalk pit at the terminating end of the road is now labelled as pit (disused). The farmhouse building appears unchanged. However, the biggest change has been around the farm buildings. The western range appears unchanged in shape and size, but the southern range has changed shape with the eastern end now labelled as Hopper. A hopper being a threshing machine. North of the farm house on the western side of the access track from the road, there is also another new building labelled as a Hopper. To the south of that building appears a couple of small sheds. To the south of the courtyard area there appears to be a large unnamed building. The area to the north of the PDA has become more wooded with some previously agrarian fields now woodland. The southern area of fields below the PDA appear unchanged (Fig.5).

Historic OS map 1994 1:2,500

- 5.5.4 The map is not clear but there appears to be little change compared to Fig. 5 (Fig. 6).

5.6 Aerial Photographs

1999

- 5.6.1 This shows the PDA site is extremely wooded on the northern side of its boundary. To the south are arable fields. The pond is surrounded by trees, as is the disused chalk pit area at the south western boundary. The farm buildings consist of the farm house on the northern side of the courtyard. Buildings along the western and southern range of the courtyard. A large barn is situated to the south of the courtyard with what appears to be an extension or lean-to with corrugated iron roofing on the southern side. On the western side of the access track is also another building that was labelled as hopper in Fig. 5 (Plate 1).

2003

5.6.2 The barn situated to the south of the courtyard appears to have been altered. It is not clear from the photo whether the extension to the barn has been cleared or that it is just different roofing material. South of the hopper building on the western side of the access track appears to have been converted into hardstanding next to the farmhouse (Plate 2).

2008

5.6.3 There does not appear to be any change (Plate 3).

2017

5.6.4 The barn extension at the southern side has been cleared leaving the main barn building. There do not appear to be any other changes (Plate 4).

5.7 Walkover Survey

5.7.1 The walkover survey is for the purpose of:

- Identifying any historic landscape features not shown on maps
- Conducting a rapid survey for archaeological features
- Making a note of any surface scatters of archaeological material
- Identifying constraints or areas of disturbance that may affect archaeological investigation

5.7.2 The walkover survey is not intended as a detailed survey but the rapid identification of archaeological features and any evidence for buried archaeology in the form of surface scatters of lithic or pottery artefacts. No artefacts or archaeological features were identified in the walkover (Plates 5-8).

5.7.3 The site is essentially fields and a group of agricultural buildings with a farmhouse. No archaeological features were identified in the fields and no archaeological artefacts retrieved. Date of site visit was Friday 2nd Feb 2018.

5.8 Summary of Potential

Palaeolithic

- 5.8.1 The Palaeolithic period represents the earliest phases of human activity in the British Isles, up to the end of the last Ice Age. The HCCHER has no record from this period within the assessment area. Therefore, the potential for finding remains that date to this period within the confines of the development site is considered **low**.

Mesolithic

- 5.8.2 The Mesolithic period reflects a society of hunter-gatherers active after the last Ice Age. The HCCHER has no record from this period within the assessment area. Therefore, the potential for finding remains that date to this period within the confines of the development site is considered **low**.

Neolithic

- 5.8.3 The Neolithic period was the beginning of a sedentary lifestyle based on agriculture and animal husbandry. Only one record from the HCCHER is for this period. Circa 600m north east of the site an enclosure (39835) was observed in 2003 and the ditch, which is best preserved where it has plotted by OS. However, the earthwork continues well beyond the mapped stretches where it has been reduced by later cultivation. The interior of the enclosure is subdivided by banks about 65m apart and is abutted on the outside by a series of linear earthworks. These are likely to represent a palimpsest of pre-woodland field boundaries and coppice earthworks, while the main mapped enclosure may be an early coppice of woodland boundary bank. Therefore, the potential for finding remains that date to this period within the confines of the development site is considered **low**.

Bronze Age

- 5.8.4 The Bronze Age was a period of large migrations from the continent and more complex social developments on a domestic, industrial and ceremonial level. The HCCHER has one record dating to this period within the assessment area. A Ring Ditch (62487) circa 690m south, south east of the PDA. It is seen from aerial photographs as cropmark of an oval enclosure, 32m x 22m. Therefore, the

potential for finding remains that date to this period within the confines of the development site is considered **low**.

Iron Age

- 5.8.5 The Iron Age is, by definition a period of established rural farming communities with extensive field systems and large 'urban' centres. The HCCHER has no record from this period within the assessment area. Therefore, the potential for finding remains that date to this period within the confines of the development site is considered **low**.

Romano-British

- 5.8.6 The Romano-British period is the term given to the Romanised culture of Britain under the rule of the Roman Empire, following the Claudian invasion in AD 43, Britain then formed part of the Roman Empire for nearly 400 years. The HCCHER has no record from this period within the assessment area. Therefore, the potential for finding remains that date to this period within the confines of the development site is considered **low**.

Anglo-Saxon

- 5.8.7 There is one HCCHER record from this period within the assessment area. A possible Saxon earthen bank (60141). It is a north-north-west - south-south-east aligned bank with a ditch to the west circa 500m east of the PDA. The bank measures approximately 4m wide and 1m high with a ditch measuring 2m wide and 0.3m deep. The bank represents the parish boundary between Hinton Ampner and Kilmeston with the boundary line revealed on the 1839 Hinton Ampner Tithe map and likely to date back to the Saxon period. The PDA does not cross this boundary and therefore, the potential or finding remains that date to this period within the confines of the development site is considered **low**.

Medieval

- 5.8.8 There is one HCCHER record from this period within the assessment area being a Medieval field system (61584) circa 960m north west of the PDA. Therefore, the potential for finding remains that date to this period within the confines of the development site is considered **low**.

Post Medieval

5.8.9 There are 11 records held at the HCCHER from this period within the assessment area. One relating to a field system with the remainder records relating to quarries or chalk pits. Chalk Pit with the majority identified via aerial photography. Some of the pits are considered possibly to be the remains of dewponds as opposed to agricultural chalk pits. In addition, the PDA itself is of Post Medieval origin, dating from 1620, with the grade II listed Black House Farmhouse (9768). There is another Grade II listed building, Riversdown House (10962), at the edge of the assessment area. Therefore, the potential for finding remains that date to this period within the confines of the development site is considered **high**.

Modern

5.8.10 There one record that may relate to the 20th century in the HCCHER within the assessment area. An earthen bank (60175) was recorded in 2007 being a series of low banks and mounds measuring up to 0.6m high possibly indicating the location of former structures. An examination of the available historic mapping reveals no evidence for structures in this location. It is possible that the banks and mounds represent a former pheasant rearing facility similar to those seen elsewhere within the wooded area of the estate, which would mean it is modern. The PDA includes agricultural buildings of unknown date and origin, which may provide evidence regarding the mechanisation of farming with the Hoppers as marked on the OS maps. These buildings may also relate to cartilage. Therefore, the potential for finding remains dating to this period is considered **high**.

Undated Records

5.8.11 There are six undated records within the assessment area. Four relate to visible cropmarks of field systems with two relating to extraction pits or dewponds. The features are seen at the outer reaches of the assessment area.

5.8.12 This desk-based assessment has considered the archaeological potential of the site but this potential can only be tested by fieldwork. The PDA is situated at a Post Medieval Farmstead that has retained its L plan courtyard into the modern

period. Therefore, the site has a high potential for the Post Medieval and Modern period, with low potential for all the other periods.

5.8.13 The desk-based assessment has considered the archaeological potential of the site. Archaeological investigations in the vicinity, map research, the historical environment record results and recent archaeological investigations have shown that the PDA may contain archaeological sites and these can be summarised as:

- Prehistoric: **low**
- Iron Age: **low**
- Roman: **low**
- Anglo-Saxon: **low**
- Medieval: **low**
- Post-Medieval: **High**
- Modern: **High**

6 IMPACT ASSESSMENT

6.1 Introduction

6.1.1 Cartographic Regression, Topographical Analysis, and Historic Research have provided evidence for the historic use of the site. By collating this information, we have assessed the impact on previous archaeological remains through the following method of categorisation:

- **Total Impact** - Where the area has undergone a destructive process to a depth that would in all probability have destroyed any archaeological remains e.g. construction, mining, quarrying, archaeological evaluations etc.
- **High Impact** – Where the ground level has been reduced to below natural geographical levels that would leave archaeological remains partly in situ either in plan or section e.g. the construction of roads, railways, buildings, strip foundations etc.

- **Medium Impact** – Where there has been low level or random disturbance of the ground that would result in the survival of archaeological remains in areas undisturbed e.g. the installation of services, pad-stone or piled foundations, temporary structures etc.
- **Low Impact** – Where the ground has been penetrated to a very low level e.g. farming, landscaping, slab foundation etc.

6.2 Historic Impacts

- 6.2.1 The PDA still retains the L plan courtyard layout of its Post Medieval buildings. It is unclear how much change has occurred to these from their original construction and therefore it is not possible to assess the survivability of any possible archaeology at the site based on Cartographic regression (5.5), Topographic analysis (1.2) and Historical research (5.4). Therefore, previous impacts to archaeological remains from construction are considered to be **unknown**

6.3 Summary of Impacts

- 6.3.1 Due to the use of the site as farm with from the Post Medieval period with some changes to the buildings in that time it is not possible to assess the survivability of any possible archaeology at the PDA.
- 6.3.2 The level of natural geology of the site is not known.

7 ARCHAEOLOGICAL MITIGATION

7.1 Introduction

- 7.1.1 The purpose of this archaeological desk-based assessment was to provide an assessment of the contextual archaeological record in order to determine the potential survival of archaeological deposits that may be impacted upon during any proposed construction works.
- 7.1.2 The assessment has generally shown that the area to be developed is within an area of **high** archaeological potential for the Post Medieval and Modern period with **low** potential for all the other periods.

8 OTHER CONSIDERATIONS

8.1 Archive

- 8.1.1 Subject to any contractual requirements on confidentiality, two copies of this desk-based assessment will be submitted to the LPA and Hampshire County Council (Heritage) within 6 months of completion.

8.2 Reliability/Limitations of Sources

- 8.2.1 The sources that were used in this assessment were, in general, of high quality. The majority of the information provided herewith has been gained from either published texts or archaeological 'grey' literature held at Hampshire County Council, and therefore considered as being reliable.

8.3 Copyright

- 8.3.1 Swale & Thames Survey Company and the author shall retain full copyright on the commissioned report under the Copyright, Designs and Patents Act 1988. All rights are reserved, excepting that it hereby provides exclusive licence to Nadim Khutter (and representatives) for the use of this document in all matters directly relating to the project.

Paul Wilkinson PhD MCIfA.

SWAT Archaeology

February 2018

9 REFERENCES

9.1 Bibliographic

Winchester City Council Local Plan Part 1: Joint Core Strategy (2013)

IFA (2014) STANDARD AND GUIDANCE for historic environment desk-based assessment

National Planning Policy Framework 2012

Data provided by Hampshire County Council HER

English Heritage Guidance (2014) The setting of the Heritage Assets

9.2 Websites

Ancient Monuments and Archaeological Areas Act 1979. Available at:
<http://www.legislation.gov.uk/ukpga/1979/46>.

Chartered Institute for Archaeologists, 2014. *Standards and guidance for historic environment desk-based assessment*. Available at: <http://www.archaeologists.net/codes/ifa>

Department of Communities and Local Government (DCLG), 2012. *National Planning Policy Framework*. Available at: <https://www.gov.uk/government/publications/national-planning-policy-framework--2>

Historic England, 2008: *Conservation Principles, Policies and Guidance for the Sustainable Management of the Historic Environment*. Available at: <https://www.historicengland.org.uk/images-books/publications/conservation-principles-sustainable-management-historic-environment/>

Historic England, 2015. *Historic Environment Good Practice Advice in Planning. Note 3: The Setting of Heritage Assets*. Available at: <http://historicengland.org.uk/images-books/publications/gpa3-setting-of-heritage-assets/>

Planning (Listed Buildings and Conservation Areas) Act 1990. Available at: <http://www.legislation.gov.uk/ukpga/1990/9/contents>

Winchester City Council Local Plan Part 1: Joint Core Strategy Adopted 2013

www.winchester.gov.uk/planning-policy/local-plan-part-1/adoption/

Historic Farmsteads and Landscape Character in Hampshire (2005)

<https://historicengland.org.uk/images-books/publications/historic-farmsteads-and-landscape-character-hampshire/>

Historic England Definition: Curtilage

<https://historicengland.org.uk/advice/hpg/hpr-definitions/c/534830/>

The National Mapping Programme. Hampshire Downland Mapping Project: English Heritage Project Number 5950: Results of NMP Air Photo Analysis in the Central Hampshire Chalk Downs.

<https://content.historicengland.org.uk/images-books/publications/nmp-hampshire-download-mapping-project/5950-hampshire-downland-nmp.pdf/>

HCCHER	Type	Location	Period	Description
	HLC			Assarted Fields. Enclosures which were formed by the clearance of woodland and scrub to form arable land. Generally early medieval to early post-medieval in age. Assarts do not seem to occur in association with downland or within areas which were once open fields. Regular assarts tend to be 19th or early 20th in date and associated with the clearance or enclosure of woodland or rationalisation of existing assarts.
34143	Name	c. 980m SW	Early Medieval	First documented in AD 961 as ORYFES DENE (Farm on the Down by the River).
38534	Monument	c. 950m SSE	undated	Linear Feature: Two linears with slight curvature, possibly a woodland bank or lynche from a 1984 air photo survey.
39835	Monument	c. 600m NE	Early Neolithic	Enclosure observed in 2003. Defined by a bank approx. 1m high and 4m wide and a 3m wide ditch which is best preserved where plotted by OS. However, the earthwork continues well beyond the mapped stretches where it has been reduced by later cultivation. The interior of the enclosure is sub-divided by banks about 65m apart and is abutted on the outside by a series of linear earthworks. These are likely to represent a palimpsest of pre-woodland field boundaries and coppice earthworks, while the main mapped enclosure may be an early coppice of woodland boundary bank.
41410	Name	c. 870m S	Early Medieval	Wheely Farm. First documented in AD 1045 as WEO LEAGE (Wood or grove with a temple or shrine).
60141	Monument	c. 500m E	Early Medieval	Possible Saxon earthen bank. North-north-west - south-south-east aligned bank with ditch to the west. The bank measures approximately 4m wide and 1m high with a ditch measuring 2m

				wide and 0.3m deep. The bank represents the parish boundary between Hinton Ampner and Kilmeston with the boundary line revealed on the 1839 Hinton Ampner Tithe map and likely to date back to the Saxon period.
60175	Monument	c. 980m NW	Post Medieval to Modern	Earthen bank recorded in 2007. A series of low banks and mounds measuring up to 0.6m high possibly indicating the location of former structures. An examination of the available historic mapping reveals no evidence for structures in this location. It is possible that the banks and mounds represent a former pheasant rearing facility similar to those seen elsewhere within the wooded area of the estate. This would indicate a 20th century date.
60936	Monument	c. 830m WSW	Undated	Field System. A series of field boundaries of uncertain date are visible as cropmark banks on aerial photographs from 2005.
61283	Monument	c. 980m WSW	Post Medieval	Field System. Three removed field boundaries are visible as cropmark banks on aerial photograph from 2005.
61481	Monument	c. 990m WNW	Undated	Pit. Two small pits are visible as cropmarks on aerial photographs. Function and date are unclear.
61482	Monument	c. 780m WNW	Post Medieval	Quarry. A large extractive pit of post medieval date, roughly 71m diameter, is visible as an earthwork on aerial photographs from 2005. Three further hollowed pits are visible within the large pit; each is at least 20m wide.
61483	Monument	c. 640m WSW	Post Medieval	Chalk Pit. Two roughly circular pits are visible on aerial photographs from 2005. They are considered likely to be either dewponds or agricultural chalk pits, of Post Medieval date.
61484	Monument	c. 650m WSW	Undated	Pit. Two small pits are visible as cropmarks on aerial photographs from 2005. Their function and date are unclear.
61486	Monument	c. 315m ENE	Post Medieval	Chalk Pit. Three roughly circular pits are visible on aerial photographs from 2005. They are considered likely to be either dewponds or agricultural chalk pits, of post medieval date.

61487	Monument	c. 790m SE	Post Medieval	Chalk Pit. A large, roughly oval pit, 66m by 33m, is visible as a cropmark on aerial photographs from 2010. It is considered likely to be the remains of either a dewpond or an agricultural chalk pit, of post medieval date.
61578	Monument	c. 820m NNE	Post Medieval	Chalk Pit. Four roughly circular pits are visible on aerial photographs from 2005 as smooth, bowl-shaped earthwork hollows. They are considered likely to be either dewponds or agricultural chalk pits, of post medieval date.
61579	Monument	c. 770m NNW	Post Medieval	Chalk Pit. Two roughly oval pits are visible as cropmarks on aerial photographs from 2005. They are considered likely to be the remains of either dewponds or agricultural chalk pits, of post medieval date.
61580	Monument	c. 935m N	Undated	Field System. A field system of uncertain origin is visible as cropmarks on aerial photographs from 2005
61583	Monument	c. 1000m N	Undated	Field System. A field system of uncertain origin is visible as cropmarks on aerial photographs from 2005.
61584	Monument	c. 960m NW	Medieval	Field System. A field system of medieval or later origin is visible as a cropmark on aerial photographs from 2005.
61585	Monument	c. 970m NNW	Post Medieval	Chalk Pit. Nine roughly oval pits are visible as cropmarks on aerial photographs from 2005. They are considered likely to be the remains of either dewponds or agricultural chalk pits, of post medieval date.
61765	Monument	c. 980m NE	Post Medieval	Chalk Pit. A roughly oval pit, 39m by 22m, is visible as a cropmark on aerial photographs from 2005. It is considered likely to be the remains of either a dewpond or an agricultural chalk pit, of post medieval date.
62487	Monument	c. 690m SSE	Early Bronze Age	Ring Ditch. An oval enclosure, 32m x 22m, is visible as a cropmark on aerial photographs from 2004.
9768	Listed Building	c. 5m N	Post Medieval	Black House Farmhouse. Grade II Listed (1155976). Early C16 and C17. Timber frame with brick infill, main part encased on ground

				<p>floor, in rubble flint with brick and stone dressings, wing has been rebuilt in brick, roof thatched with tiled valleys. T-shaped with 2 bay, 2 storey building with 1 1/2 storey 2 bay wing added to rear at centre. Garden front 2 storey, 2 bay with plinth, flint ground floor with 2 C19 3 light casements and above 2 C16 oriel windows supported on single central timber bracket with C19 3 light casements, C19 externals tack at right end. Other windows and doors C19. Roof half hipped with decorated ridge piece, and outshot on one side of rear wing. Dated by dendrochronology to 1620.</p>
10962	Listed Building	c. 990m SW	Post Medieval	<p>Riversdown House. Grade II* listed (1350307). Used as a school. C14 timber framed hall with C17 timber framed internal additions and fireplaces, early C19 cladding, and restoration with many features of c.1900. Brick walls of Flemish Garden Wall bond, some cambered openings, one large stepped buttress on the east elevation. Tile roof, hipped at the north end, extending to a low eaves on the west side, with narrow hipped dormers at two levels, hipped and half-hipped minor extensions. The general form of the large medieval hall is seen externally, above walls of one, two and three storeys, forming irregular facades as minor projections to the main block, irregular fenestration. Casements, mostly small: the south side has a narrow two-storeyed splayed bay, tile-hung between the windows, with a steep hipped slate roof. Gabled porch. The low wings and projecting features represent an interesting Art Nouveau exterior. Dendrochronology dated it to 1326 and 1327. In 1337, Hugh de St. John died possessed of Riversdown and he may well have been the builder of the hall. The St. John family was one of the main lay landowners in Hampshire at that time.</p>

Figure 10: HCCHER - Monument Records

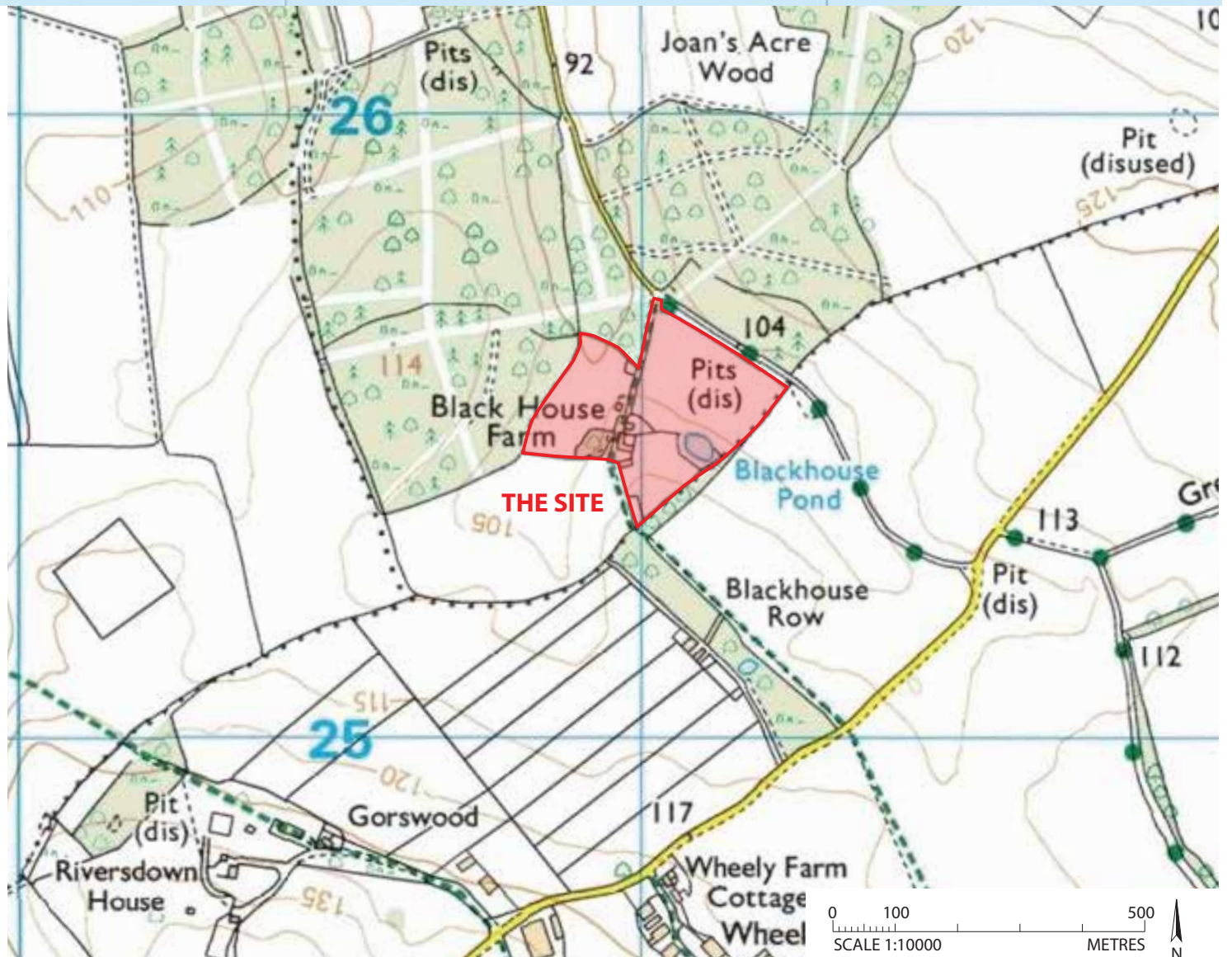
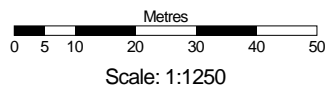


Figure 1: Site location map, scale 1:10000.

OS Plan Colour



Supplied By: National Map Centre
Licence number: 100031961
Produced: 18/01/2018
Serial number: 1935964



Black House Farm
Hinton Ampner



Figure 2: OS map - farm buildings

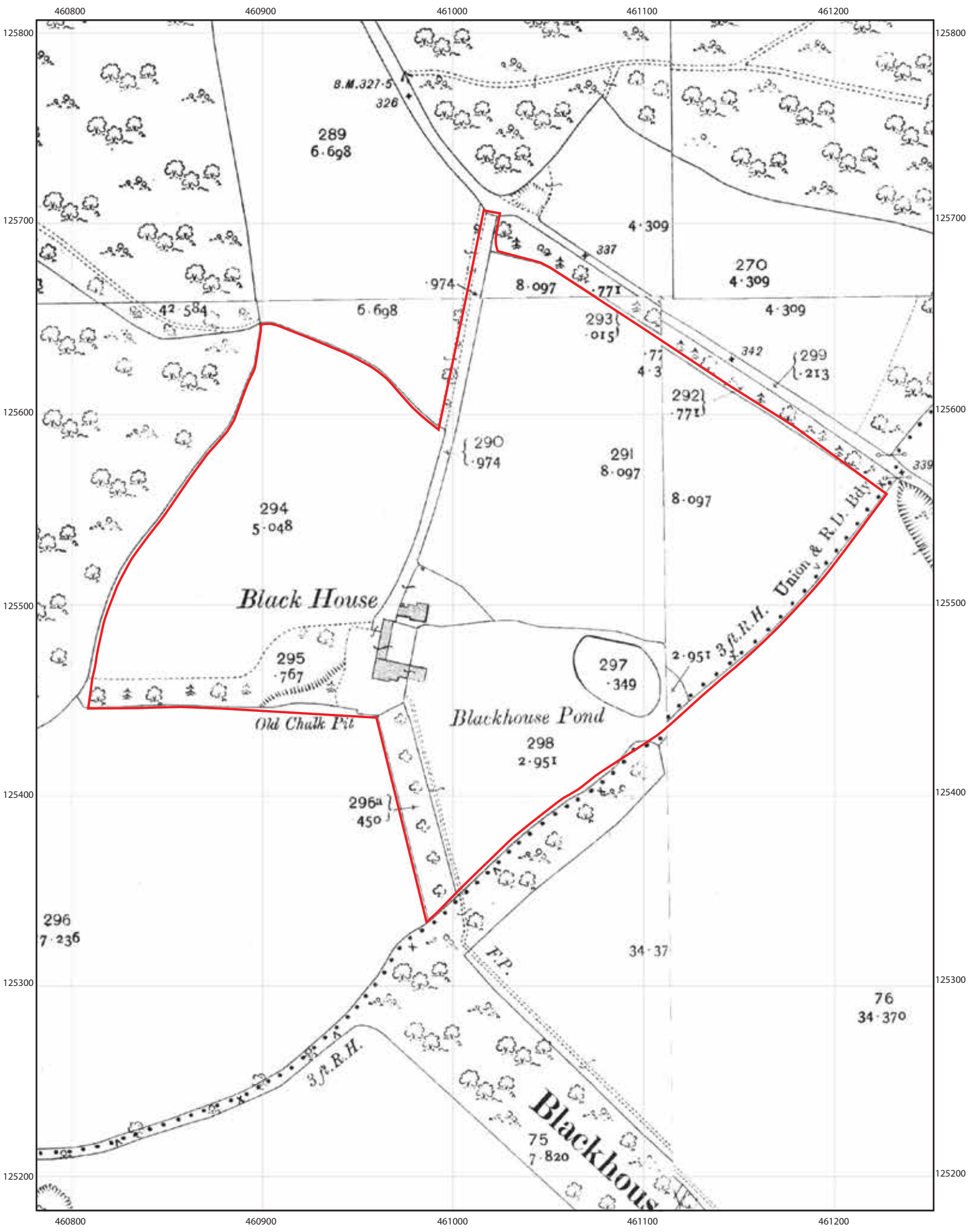


Figure 4: Historic OS map from 1909, scale 1:2500

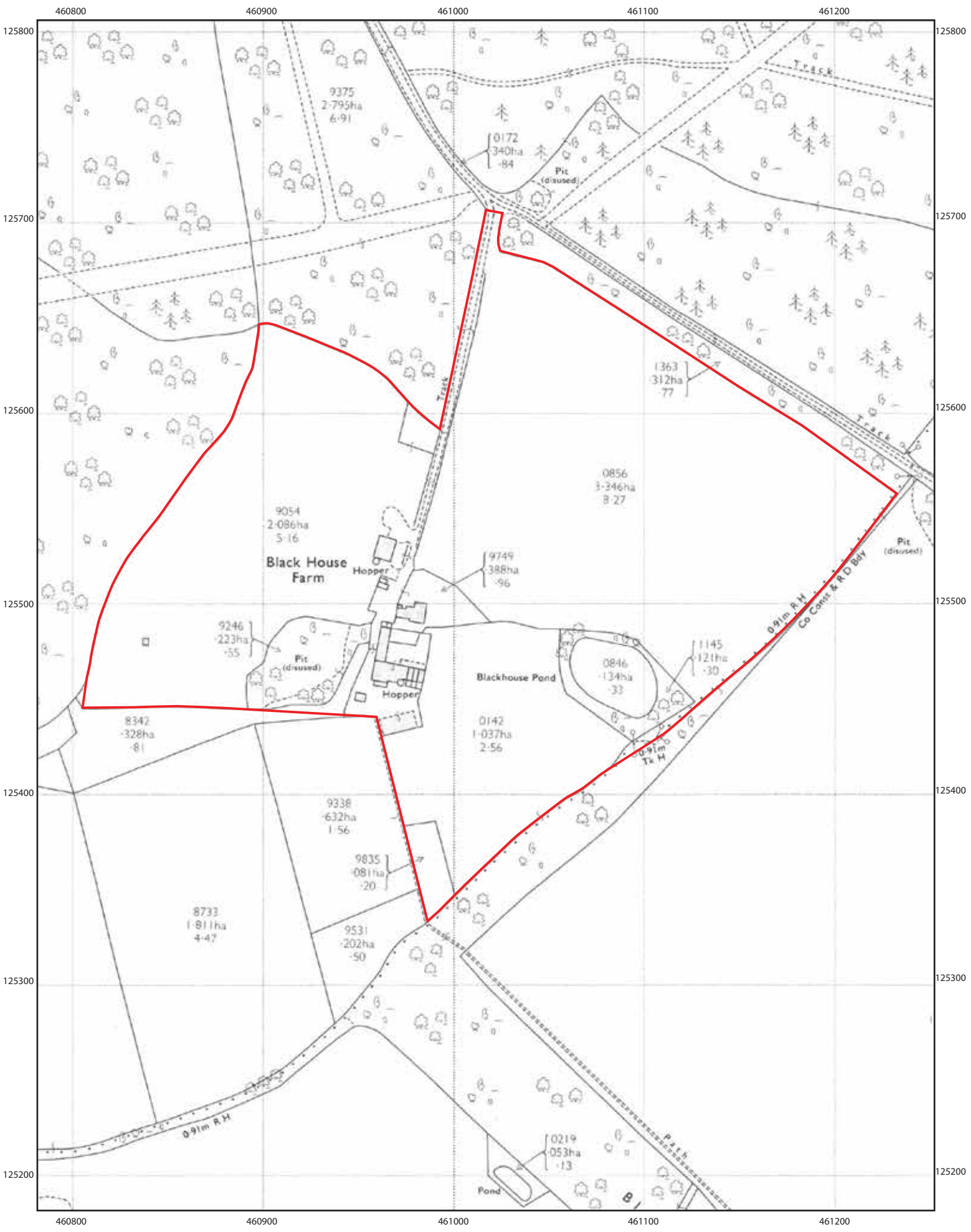
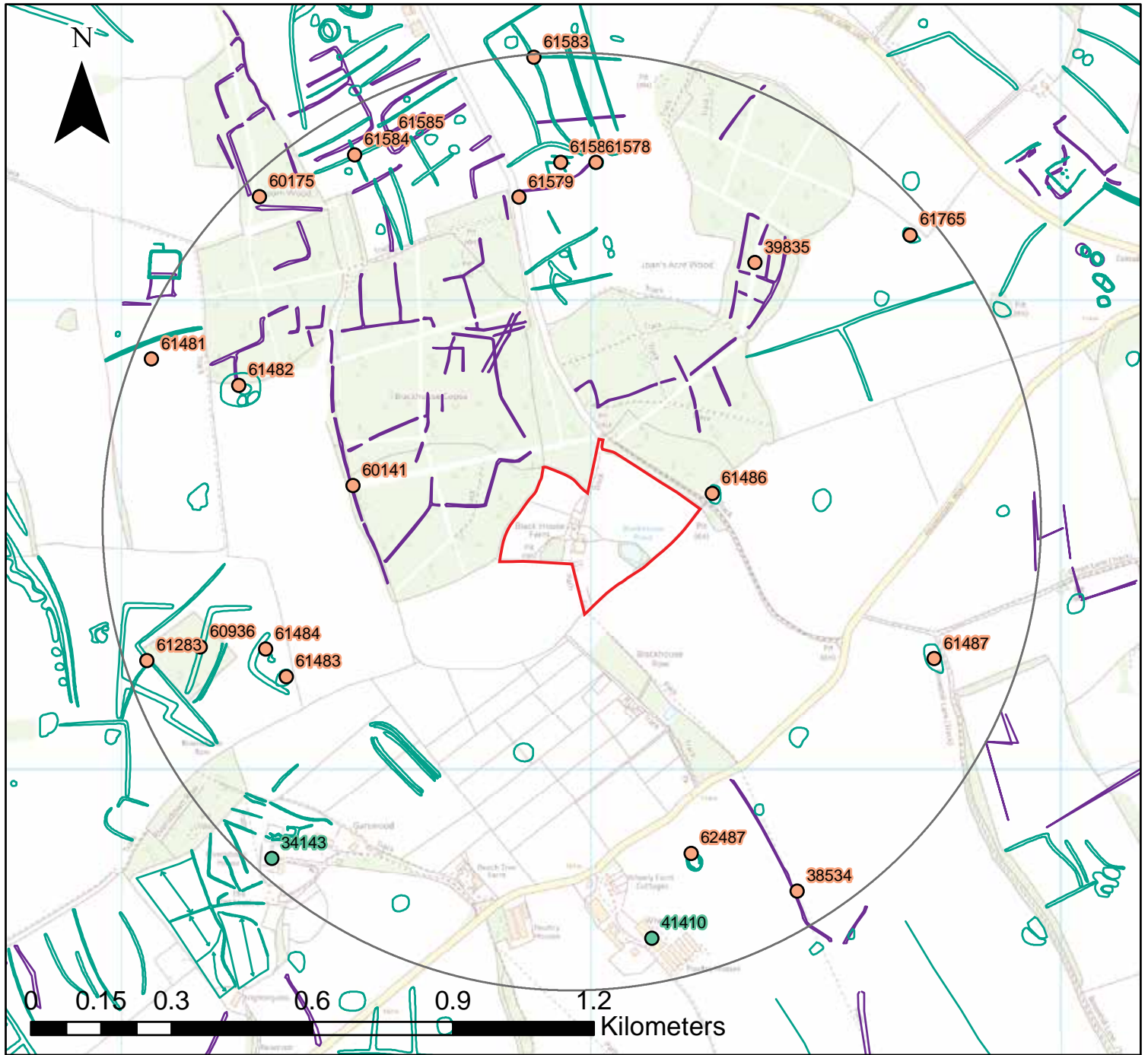


Figure 5: Historic OS map from 1970, scale 1:2500

Archaeology HER search Black House Farm 18/01/2018



Legend

- MONUMENT
- NAME
- NMP Cropmarks
- HCC Cropmarks

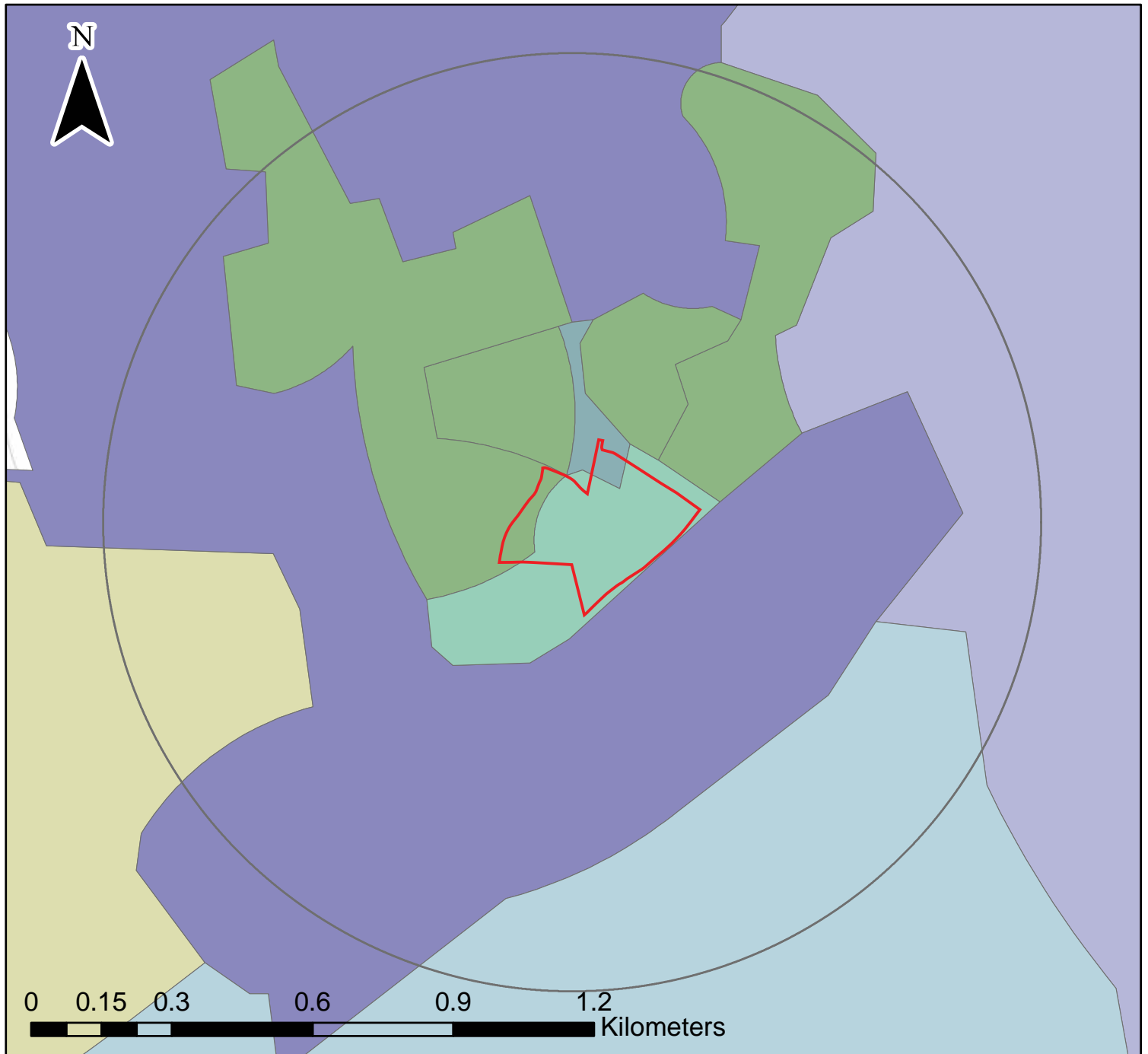


Hampshire
County Council

© Crown copyright and database rights 2017 Ordnance Survey 100019180. Use of this data is subject to terms and conditions. You are granted a non-exclusive, royalty free, revocable licence solely to view the Licensed Data for non-commercial purposes for the period during which HCC makes it available. You are not permitted to copy, sub-licence, distribute, sell or otherwise make available the Licensed Data to third parties in any form. Third party rights to enforce the terms of this licence shall be reserved to Ordnance Survey

Figure 8: Historic environment record - archaeology.

Historic Landscape Types HER search Black House Farm 18/01/2018



Legend

- Assarts
- Ex-downland fields
- Large wavy fields
- Other old woods
- Parliamentary fields
- Plantations
- Small wavy



Hampshire
County Council

© Crown copyright and database rights 2017 Ordnance Survey 100019180. Use of this data is subject to terms and conditions. You are granted a non-exclusive, royalty free, revocable licence solely to view the Licensed Data for non-commercial purposes for the period during which HCC makes it available. You are not permitted to copy, sub-license, distribute, sell or otherwise make available the Licensed Data to third parties in any form. Third party rights to enforce the terms of this licence shall be reserved to Ordnance Survey

Figure 9: Historic environment record - historic landscape types.



Plate 1: Google Earth aerial photograph from 1999



Plate 2: Google Earth aerial photograph from 2003



Plate 3: Google Earth aerial photograph from 2008



Plate 4: Google Earth aerial photograph from 2017

PLATES



Plate 5. View of Site (looking north)



Plate 6. View of Site (looking south)



Plate 7. View of Site (looking west)



Plate 8. View of Site (looking east)